

SILVER CLOUD™ QUICKTOUR

A Step-by-Step Guide Through Using
Silver Cloud Demonstration Software



The AG Group, Inc.
2540 Camino Diablo, Suite 200
Walnut Creek, CA 94596
USA
(800) 466-AGGP
(510) 937-7900
fax (510) 937-2479
Internet: info@aggroup.com
eWorld: AGGROUP
CompuServe: 74431,2500
AppleLink: AG.GROUP
Apple Remote Access: (510) 937-6704
Visit our Worldwide Web Site: <http://www.aggroup.com/>

WELCOME TO YOUR SILVER CLOUD DEMO!

This demo contains a demonstration version of Silver Cloud, our hierarchical Macintosh Chooser replacement and personal zone manager. We hope you'll agree, after your review of the software, that Silver Cloud furthers our corporate goal: to simplify the task of network management.

Silver Cloud is a replacement for the Macintosh Chooser and a personal zone management utility which can help you:

- Increase productivity
- Simplify network use
- Reduce user training requirements
- Centralize access controls

NOTE: This demonstration version is full-featured but intentionally disabled in the following manner:

- Silver Cloud configurations will be saved for 60 minutes only and the administrative function has been disabled.
- The Silver Cloud NetDistributor, which ships with the commercial version of the software, is not included with the demo. This utility allows the user to update and distribute Silver Cloud across the network from a central location.

ABOUT THIS QUICKTOUR

This "QuickTour" is intended to make your evaluation of AG Group software fast and easy. It concentrates on a few key features, describes their functions and benefits, and then follows with step-by-step instructions to help you exercise them with the demo software.

WHAT YOU NEED

- Macintosh SE or higher
- System 6.0.5 or higher
- AppleTalk v. 56 or higher (automatically included in System 7.0 or higher)

NOTE: Please check the ReadMe document on your disk for more detailed information about the demo software.

GETTING STARTED—SILVER CLOUD

Silver Cloud is a replacement for the Macintosh Chooser which is easily described as both a productivity enhancing utility and a network management tool. Your Silver Cloud demo disk does not have any administrative features enabled, so the features on which we focus are applicable to individual use. At the end of this section, we describe the network management features included with the commercial version of Silver Cloud.

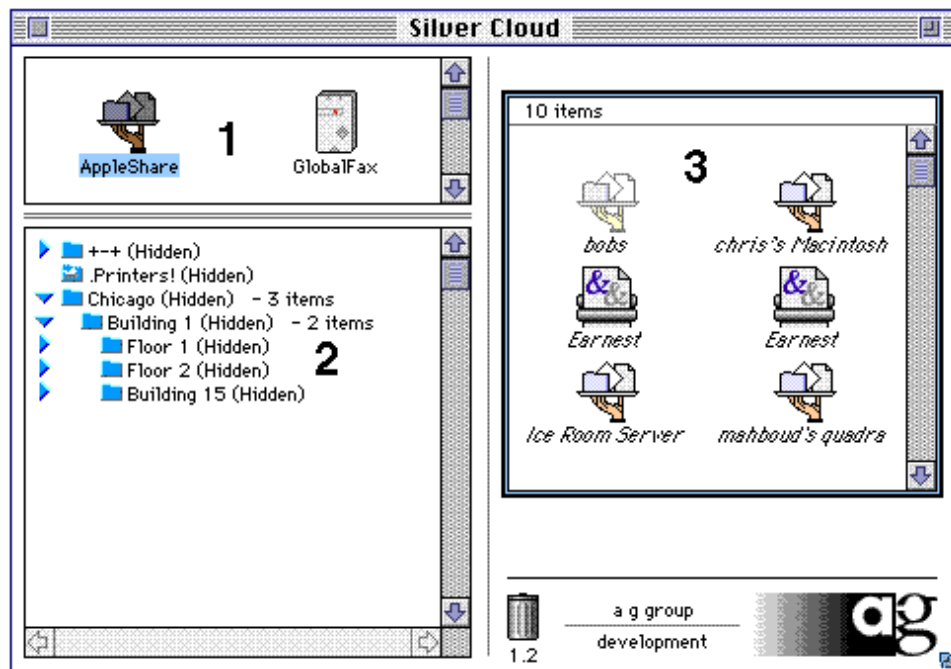


To install Silver Cloud, double click on the “Installer” application. Once the program is installed, launch the application by selecting “Ag Cloud” under the Apple Menu.

NOTE: This demo version will save your configurations for a maximum of 60 minutes and does not include any administrative features. In addition, on first launch, Silver Cloud builds the “•AppleTalk” folder containing the zone list. The process of building a zone list can be slow on larger networks, but is not a necessary step for subsequent launches. In fact, testing shows that, in most cases, Silver Cloud launches faster than Chooser.

BACKGROUND: THE SILVER CLOUD WINDOW

Summary: The Silver Cloud Window is similar to the Macintosh Chooser. As we go through this demonstration, we'll be referring to the three boxes which comprise the Silver Cloud window.



1. Services Box (Top Left). This box displays the Chooser extensions used to access services, such as file sharing or printers, that are available on your network. Click on any item to select it.
2. Zones Box (Bottom Left). Zones are subdivisions of a network into which devices are grouped. In Silver Cloud, this window contains two types of folders: "Zone Folders," which can contain actual zones, zone aliases and device folders; and "Device Folders," in which device aliases from any number of zones can be grouped.
3. Device Box (Top Right). After you select a service type and zone location, the actual devices available for you are displayed here.

FEATURE FOCUS #1: MULTIPLE OBJECTS, MULTIPLE ZONES

Search for Printers and Servers in Several Zones--At Once!

Summary: While Silver Cloud looks and feels just like Chooser, there are some improvements that make life a lot easier. One of these is the ability to use the “shift-click” command to highlight several zones and device types at once.

Step-by-Step Example: Finding All Your Printers

1. Click in the Services Box.
2. Click on “LaserWriter”.
3. Click in the Zones box.
4. Be sure the “•AppleTalk” folder is open. To open this folder, double-click on it or click on the triangle to the left of the folder so it is facing downward.
5. Select all zones by typing “command-A” or “clover-A”.
6. All LaserWriters will appear in the Device Box.




NOTE: On larger networks, the search can be prohibitively long when all zones are selected. In this case, select just a few zones using “shift-click”.

When you can display a variety of devices from a number of zones, it makes it simple to scan your choices and select precisely the device you need.

FEATURE FOCUS #2: CREATING ALIASES

Your Favorite Printers, Servers One Click Away

Summary: Silver Cloud lets you create aliases for your favorite devices and place them in “device folders”. Once created, aliases make selecting these devices as simple as a click or two.

 File Servers - 8 items
 Network Modems - 4 items
 Printers - 2 items

Step-by-Step Example: Creating a Device Folder

1. Select “New Device Folder” from the Silver Cloud menu.
2. Name the folder “Printer and Server”.
3. Click in the Services Box (top left).
4. Shift-click on “AppleShare” and “LaserWriter”.
5. Click in the Zone Box (bottom left).
6. Highlight zones containing your favorite server and printer.
7. When the devices appear, click on your favorite LaserWriter in the Device Box and drag it to the “Printer and Server” Device Folder. An alias is created.
8. Similarly, click on your favorite server in the Device Box and drag it to the “Printer and Server” Device Folder.
9. Click on the “Printer and Server” Device Folder. You’ll see your aliases displayed, even if they were originally in separate zones.

FEATURE FOCUS #3: CREATING A NETWORK VIEW

Building Your Own Personal Network

Summary: Once you can create aliases, you're well on your way to making a simple network view. The next step is to build the view and hide extraneous items.



Step-by-Step Example: Creating a Network View

Step One: Create a Hierarchy

The first step in this process is to create zone and device folders and experiment with clicking and dragging to build a hierarchy. Using the Silver Cloud menu items “New Zone Folder” and “New Device Folder”, you can create the hierarchy shown above.

Step Two: Hide The Extraneous Items

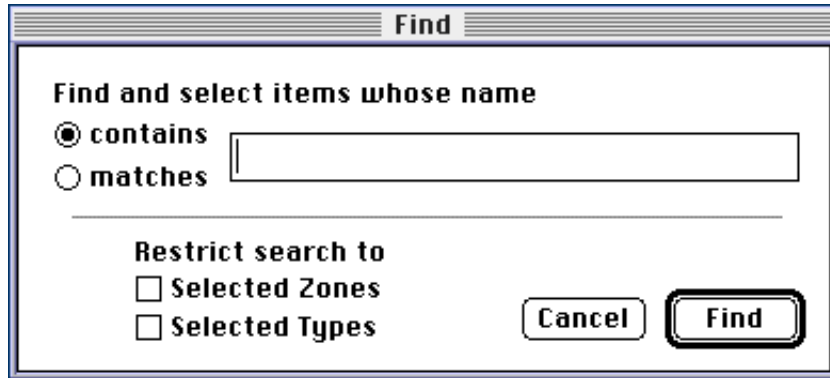
1. Using Shift-click, select the folders “USA” and “•AppleTalk”.
2. Select “Hide” from the Silver Cloud menu.
3. Be sure “Display All Items” in the Silver Cloud menu is NOT checked.
4. All items except your device folders disappear.

By hiding everything but the aliases for devices you need, you can simplify using the network. The hiding process described here eliminates the need to search through a long zone list each time you want to choose a new network resource.

FEATURE FOCUS #4: THE FIND COMMAND

Let Silver Cloud Do The Searching

Summary: Silver Cloud also includes a “Find” command which allows you to type in the name of a file server, printer or other network service instead of hunting around various service-zone combinations.



Step-by-Step Example: Finding A Printer

1. Click in the Services Box (top left).
2. Select LaserWriter.
3. Select “Find” from the Silver Cloud menu.
4. Type the printer name of interest.
5. Check the box “Selected Types”.
6. Click “Find”.
7. Silver Cloud finds the printer for you.

NOTE: You can also limit your search to selected zones on larger networks. Searching all zones can be a lengthy process.

This is another small example of how Silver Cloud has borrowed the best features of Finder to help you manage the growing number of zones and devices on your network.

FEATURE FOCUS #5: NETWORK MANAGEMENT FEATURES

Silver Cloud Also Offers Managers Control of Views

Summary: Your Silver Cloud Demo copy does not contain the powerful network management and administration features included with the shipping version. Now that you have seen how Silver Cloud simplifies life from the Desktop, you can see how powerful it would be if you could control the “network views” for all the users in your organization. Silver Cloud supports this with these features:

- **Network Installer.** The Silver Cloud NetDistributor, based on technology licensed from Symantec, Inc., allows you to distribute customized views of the network to different groups of users, or individual users, from your desk. You simply create a view and distribute the resulting “config” file using this free utility.
- **Configuration Files.** Silver Cloud can be “locked” using a configuration file which is password-protected. These “config files” can be used to hide all but the most important, straightforward items from users, eliminating confusion and training. Users can build their own network views, but these are always based on the foundation provided by the network manager and contained in the config file.
- **Replacing Chooser.** You can avoid confusion for users and simplify access to the Silver Cloud Window and the resources available by replacing Apple Computer, Inc.'s Chooser Desk Accessory in the Apple Menu and installing Silver Cloud renamed as "Chooser".

CONCLUSION: SOME TECHNICAL ADVANCES SUMMARIZED
There's More to Silver Cloud Than Meets the Eye

Summary: Silver Cloud is more than just a desktop utility. It is designed to make today's networks more efficient and accessible. We couldn't let your evaluation end without telling you some of the things that Silver Cloud can do for you behind the scenes.

- **Automatically Create Folders.** Silver Cloud can be configured to automatically create folders based on your zone and device naming system. For example, if you name zones using <bldg_number - floor_number - department>, Silver Cloud can automatically create folders for the buildings, floors and departments.
- **Solve System 6.x Chooser Problems.** If your environment is based on System 6.x, you probably know that Chooser is limiting. Silver Cloud runs under System 6.x and eliminates mandatory scrolling, mysterious list changes, and extraneous NBP traffic.
- **Reduce Network Overhead.** Chooser function requires a great deal of overhead because of its reliance on broadcast packets, which then elicit a flood of responses. Silver Cloud sends one address-specific packet to the aliased device to confirm its availability.
- **Support Remote Access.** Silver Cloud was developed after the advent of AppleTalk Remote Access. It is optimized for the pauses and inconsistent timing involved with dial-in use.
- **Remember Multiple Networks.** Since Silver Cloud saves configurations, people who connect to multiple networks can keep separate folders for each location. As items become available, they are no longer "grayed-out".
- **Address PowerBook Needs.** Users who connect remotely to various networks appreciate the fact that Silver Cloud remembers their network view of preference, saving them expensive connect time.

THANKS FOR YOUR INTEREST IN OUR PRODUCTS AND FOR TAKING THE TIME TO REVIEW OUR SOFTWARE!

SILVER CLOUD ORDERING INFORMATION*

Silver Cloud is available from:

- The AG Group (800) 466-AGGP, sales@aggroup.com
- Your favorite software reseller

Silver Cloud Suggested List Pricing

25-user Pack \$495

50-user Pack \$895

100-user Pack \$1,595

250-user Pack \$3,095

Online Ordering!

You can order any AG Group product via the Worldwide Web. Just visit our web site at <http://www.aggroup.com> and select the pointer to the online order form.

Resellers may order this product from Ingram Micro:

25-user Pack PN#162111

*Prices subject to change without notice.

**Education, Developer, Government, and Consultant Discounts Available. Please contact AG Group Sales for further information.

ADDITIONAL PRODUCT INFORMATION

ABOUT THE AG GROUP, INC.

The AG Group, Inc. specializes in easy-to-use software tools for troubleshooting, optimizing, maintaining and expanding multivendor computer networks. While designed to take advantage of the intuitive, graphical interface of the Macintosh, our products can be used in virtually any heterogeneous networking environment.

Please call us for more information on:

- Network Analysis Training
- Network Analysis Consulting
- Recommended Reading

AG GROUP PRODUCT OFFERINGS

Network Analyzers

EtherPeek™ Ethernet Network Analyzer

LocalPeek™ LocalTalk Network Analyzer

TokenPeek™ Token-Ring Network Analyzer

Network Monitors

Skyline™ Network Traffic Archiving and Analysis Program

Satellite™ Network Traffic Data Collection Engine

Net Watchman™ AppleTalk Network Early Warning Monitor

Network and AppleShare Utilities

Nok Nok™ Personal File Sharing Monitor

Nok Nok A/S™ AppleShare Server Monitor

Silver Cloud™ Hierarchical Chooser Replacement

EtherHelp™, LocalHelp™, TokenHelp™ Remote Capture Utilities

Network Management Training

Network Troubleshooting Videotape Series

Network Troubleshooting Starter Kits for Ethernet and LocalTalk

AG Group Service Contracts

Service contracts are a cost-effective way to ensure that you grow along with The AG Group as new versions and ideas are incorporated into the products. All AG Group customers are entitled to technical support for the life of their purchase and 90 days of automatic shipments of free updates and bug fixes. Service Contracts extend the free update period for one or two years and provide an extra level of service, including:

- Priority telephone, electronic mail, remote access and fax technical support
- Free product updates and bug fixes
- Free documentation updates
- First run copies of Node News, our quarterly newsletter
- Regular TechTips mailings
- Pre-release software access
- Discounts on other AG Group products

HOW TO REACH THE AG GROUP

By Telephone:

800-466-2447

510-937-7900

By Fax:

510-937-2479

By Electronic Mail:

AppleLink: AG.GROUP

CompuServe: 74431,2500

eWorld: AGGROUP

Internet: info@aggroup.com

Online Archives

Internet: ftp.aggroup.com

Worldwide Web: <http://www.aggroup.com/>

CompuServe: Go AGGROUP

AppleLink: Third Parties (A-G)/AG Group

eWorld: Go AGGROUP

By U.S. Mail (Or To Visit!)

The AG Group, Inc.

2540 Camino Diablo, Suite 200

Walnut Creek, CA 94596